

H.265 PoE IP Camera

ICA-x80 series

Quick Installation Guide

Table of Contents

1. Introduction	3
2. Package Contents	4
3. Requirements	5
4. Starting Web Management	6
4.1 Logging in to the ICA-x80 Series.....	7
5. Recovering Back to Default Configuration.....	11
Customer Support.....	13

1. Introduction

Thank you for purchasing PLANET H.265 PoE IP Camera. The **"ICA-x80 series"** is used for all the models described below in this Quick Installation Guide.

ICA-3280	H.265 1080p Smart IR Bullet IP Camera
ICA-4280	H.265 1080p Smart IR Dome IP Camera
ICA-3480	H.265+ 4MP Smart IR Bullet IP Camera
ICA-4480	H.265+ 4MP Smart IR Dome IP Camera
ICA-3480F	H.265+ 4MP Full Color Bullet IP Camera
ICA-4480F	H.265+ 4MP Full Color Dome IP Camera
ICA-M3580P	H.265+ 5MP Full Color/Smart IR Bullet IP Camera with Remote Focus and Zoom
ICA-M4580P	H.265+ 5MP Full Color/Smart IR Dome IP Camera with Remote Focus and Zoom
ICA-3880	H.265+ 8MP Full Color/Smart IR Bullet IP Camera
ICA-4880	H.265+ 8MP Full Color/Smart IR Dome IP Camera

2. Package Contents

Open the box of the ICA-x80 series and carefully unpack it. The box should contain the following items:

- The IP Camera x 1
- Quick Start QR Code Sheet x 1
- Screw Package x 1
- Waterproof Connector Package x 1
- Drill Template x 1

If any item is found missing or damaged, please contact your local reseller for replacement.

3. Requirements

- Workstations running Windows 10/11, MAC OS X or later, Linux, UNIX, or other platforms are compatible with TCP/IP protocols.
- Workstations are installed with Ethernet NIC (Network Interface Card).
- One IEEE 802.3af/at PoE switch (Supply power to the ICA-x80 series)
- **Ethernet Port Connection**
 - **Network cables** -- Use standard network (UTP) cables with RJ45 connectors.
 - The above PC is installed with **Web browser**.



Note

It is recommended to use Chrome to access the ICA-x80 series. If the Web interface of the ICA-x80 series is not accessible, please turn off the anti-virus software or firewall and then try it again.

4. Starting Web Management

The following shows how to start up the **Web Management** of the ICA-x80 series. Note the ICA-x80 series is configured through an Ethernet connection. Please make sure the manager PC must be set to the same **IP subnet address**.

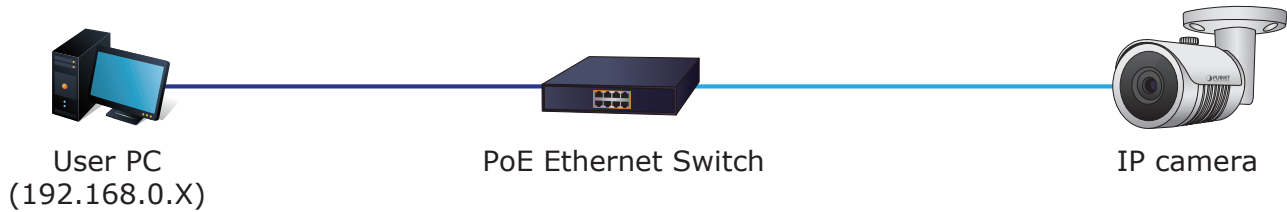


Figure 4-1: IP Management Diagram



1. The ICA-x80 series supports IEEE 802.3af/at standard; be reminded to power either from AC to DC adapter or 802.3af/at PoE switch.
2. The AC to DC adapter is not included in the package.

For example, the ICA-x80 series default network type is **DHCP Client**. To search the current IP address of the ICA-x80 series, follow the procedure below:

1. Download the "**PLANET Search Tools**" utility from the following PLANET website link: <http://www.planet.com.tw/en/support/downloads?method=keyword&keyword=PLANET+Search+Tools&view=6#list>
2. Install the "**PLANET Search Tools**" utility.
3. After the camera utility is launched, all cameras found in your local area network will be displayed.
4. The existing ICA-x80 series in the local network.
5. Search the ICA-x80 series in the network.
6. Modify the IP parameters of the selected ICA-x80 series.
7. Select the ICA-x80 series you want to configure and double-click on it.

8. You will be connected to the ICA-x80 series via web browser automatically.

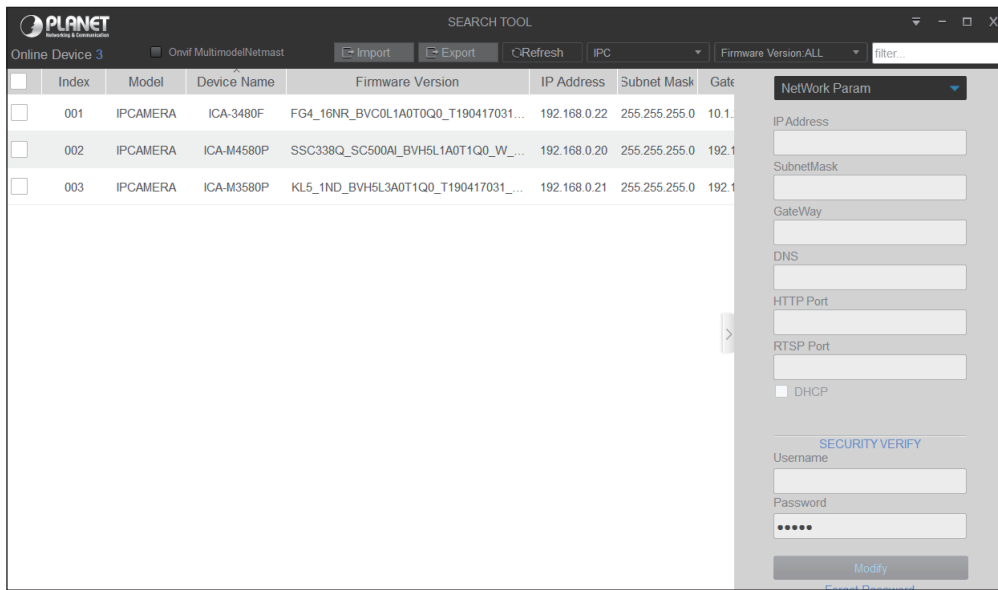


Figure 4-2: PLANET Search Tools Utility Screen

9. Without DHCP server, the ICA-x80 series default IP address is **192.168.0.20**, then the manager PC should be set to **192.168.0.x** (where x is a number between 1 and 254, except 20), and the default subnet mask is 255.255.255.0.

4.1 Logging in to the ICA-x80 Series

1. When the following dialog box appears, please enter the default user name and password **"admin"**. The login screen in Figure 4-3 appears.

Default IP Address: **DHCP client**, fallback IP address **192.168.0.20**
Default Username: **admin**
Default Password: **admin**

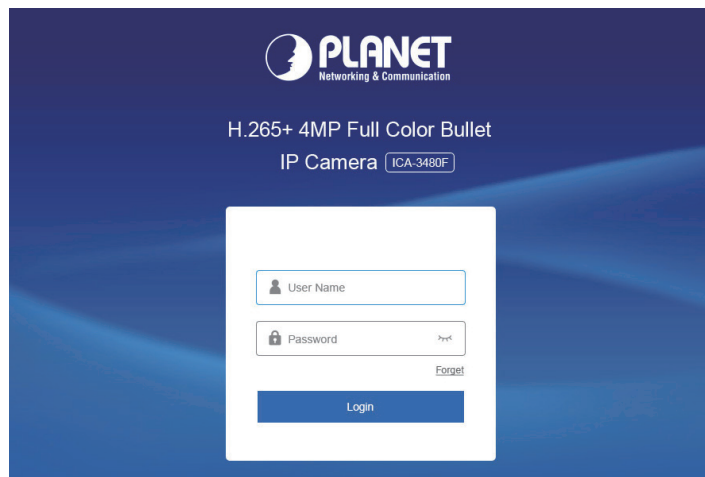


Figure 4-3: ICA-x80 series Web Login Screen



Note

1. The following web screen based on ICA-3480F will be the same as that of ICA-x80 series.
2. The following steps is based on the firmware version before **August of 2024**.

2. After entering the username and password, the main screen appears as Figure 4-4 and Figure 4-5 show.

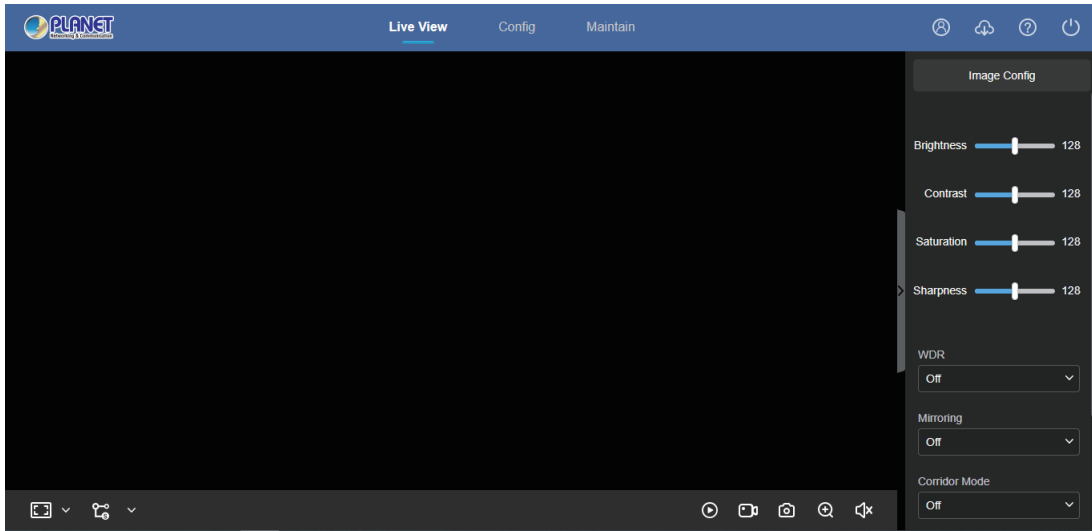


Figure 4-4: Web Main Screen of ICA-x80 series

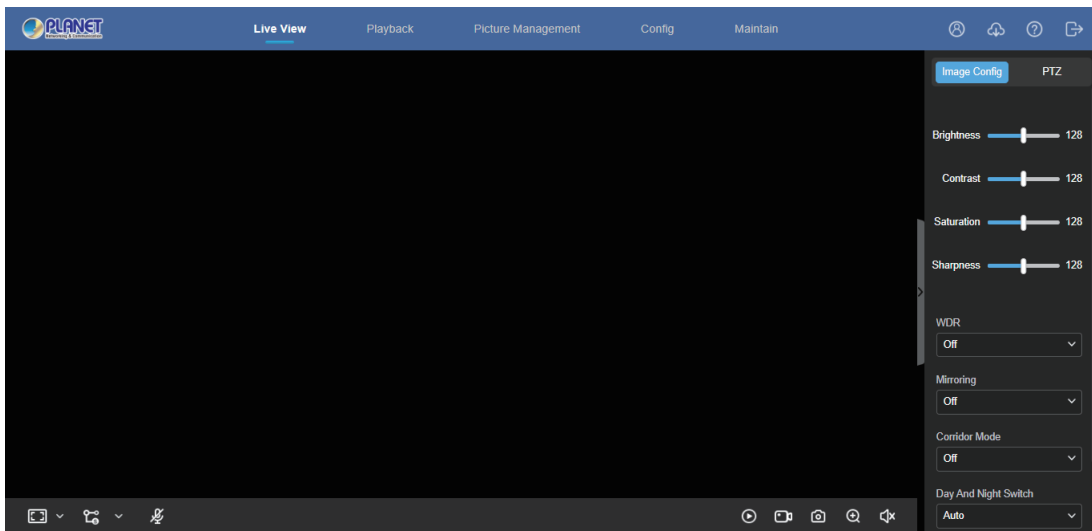


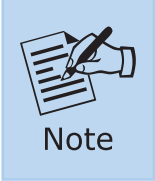
Figure 4-5: Web Main Screen of ICA-Mx580P series



Note

Figure 4-5 is for ICA-M3580P/ICA-M4580P only.

Now, you can use the Web management interface to continue the ICA-x80 series management. Please refer to the user’s manual for more.



The following web screen is based on the firmware version of **August of 2024 or after**.

- 3. After entering the username and password, the main screen appears as Figure 4-6-1 shows. You will be required to change the password. The length of the password should be at least 8 to 31 digits with two or more combinations of numerals, and lowercase and uppercase letters, and special characters (~!@#\$%^&*-_+=|;:./?). You also need to set a Security Question and Answer, and perform an Export Key to avoid forgetting the password in the future. Please create a new password and log in again.

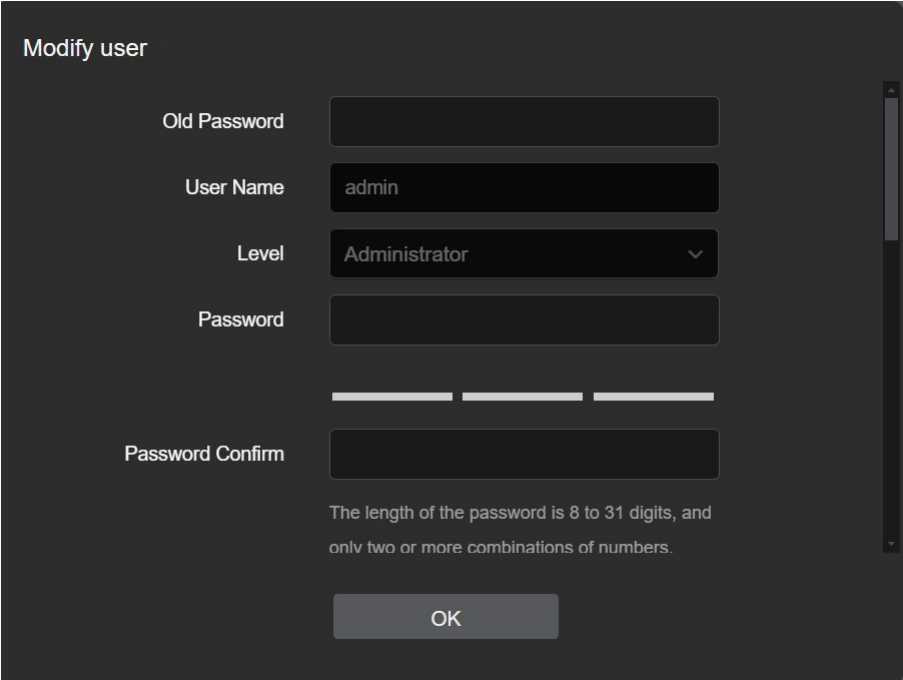


Figure 4-6-1: Modify User Screen of ICA-Mx580P series

Modify user

Security Question1

Answer1

Security Question2

Answer2

Security Question3

Answer3

Export Key

OK

Figure 4-6-2: Modify User Screen of ICA-Mx580P series



Note

If you have already changed the password via web login, please use this new password to log in and skip step 3.

5. Recovering Back to Default Configuration

■ IP Address has been changed or admin password has been forgotten –

To reset the network type to the default “**DHCP Client**” with IP address “**192.168.0.20**” or reset the login password to default value, press the hardware-based reset button for about 10 seconds. After the ICA-x80 series is rebooted, you can log in the management Web interface within the factory default mode.

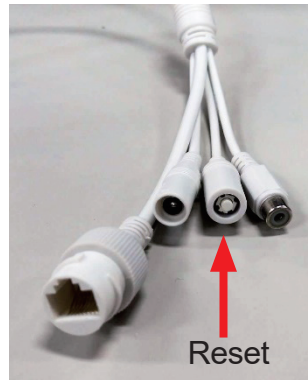


Figure 5-1: Reset Button



Note

For ICA-3280/ICA-4280/ICA-3480/ICA-4480/ICA-3480F/ICA-4480F only.

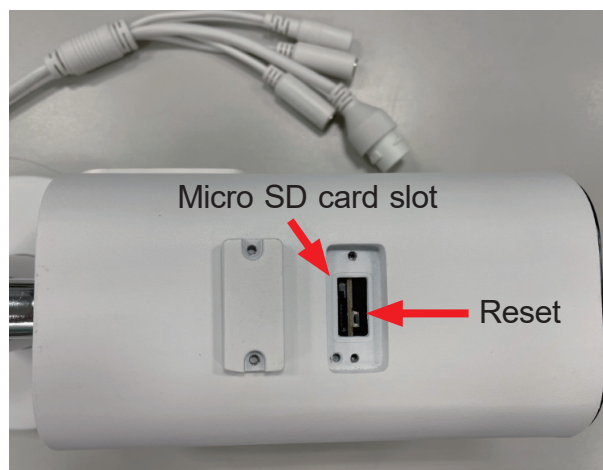


Figure 5-2: Reset Button and Micro SD Card Slot of ICA-M3580P

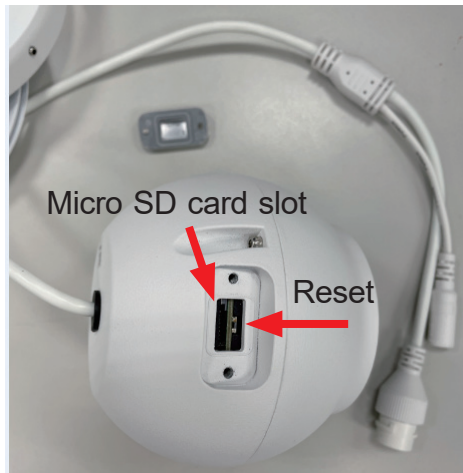


Figure 5-3: Reset Button and Micro SD Card Slot of ICA-M4580P



Note

Only ICA-M3580P and ICA-M4580P can support SD card slot.

Customer Support

Thank you for purchasing PLANET products. You can browse our online FAQ resource and User's Manual on PLANET Web site first to check if it could solve your issue. If you need more support information, please contact PLANET support team.

PLANET online FAQs:

<http://www.planet.com.tw/en/support/faq?method=category&c1=8>

Support team mail address:

support@planet.com.tw

ICA-x80 Series User's Manual:

<https://www.planet.com.tw/en/support/downloads?&method=keyword&keyword=ICA-x80+series&view=3#list>



Android App	IOS App
	

Copyright © PLANET Technology Corp. 2024.

Contents are subject to revision without prior notice.

PLANET is a registered trademark of PLANET Technology Corp.

All other trademarks belong to their respective owners.